



HH3600/F SERIES

PRODUCT INSTRUCTION MANUAL



HIGH QUALITY LOCKING DEVICE PROVIDER

Copyright © 2026 Shanghai One Top Corporation. All rights reserved. www.onetoplock.com



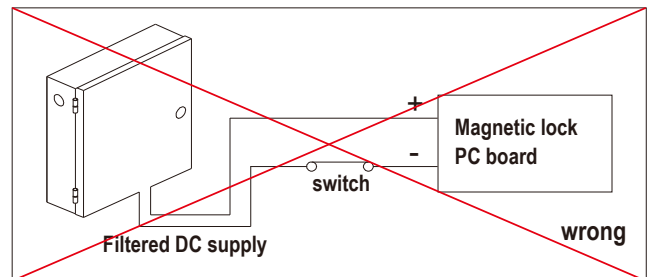
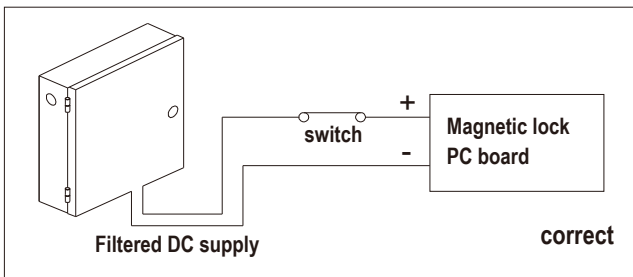
HH3600/F SERIES

The HH3600/F series (single) and HH3600D/F series (double) electromagnetic locks are eco-friendly, UL 3-hour fire-rated electromagnets with a high holding force exceeding 300kg. These locks require a regulated DC power source of 12V or 24V. A selectable wire jumper allows compatibility with either 12VDC or 24VDC input. Optional features include a Door Status Sensor and a delay relock function adjustable from 0 to 110 seconds.

HH3600/F SERIES

MODEL	LED DISPLAY	LOCK SENSOR	DOOR SENSOR	DELAY RELOCK
HH3600U/F / HH3600DU/F	V	—	—	—
HHH3600U DSS/F / HH3600DU DSS/F	V	—	V	—
HH3600/F / HH3600D/F	V	V	—	—
HH3600T/F / HH3600DT/F	V	V	—	V
HH3600 DSS/F / HH3600D DSS/F	V	V	V	—
HH3600T DSS/F / HH3600DT DSS/F	V	V	V	V

SWITCHING DEVICE CONNECTION TO ENSURE INSTANT RELEASE



ELECTRICAL DATA

POWER INPUT	HH3600U	HH3600	HH3600T
12VDC	0.50A	0.52A	0.52A
24VDC	0.25A	0.26A	0.26A

For HH3600D/F series, there are two magnetic lock on the double door, so current is double.

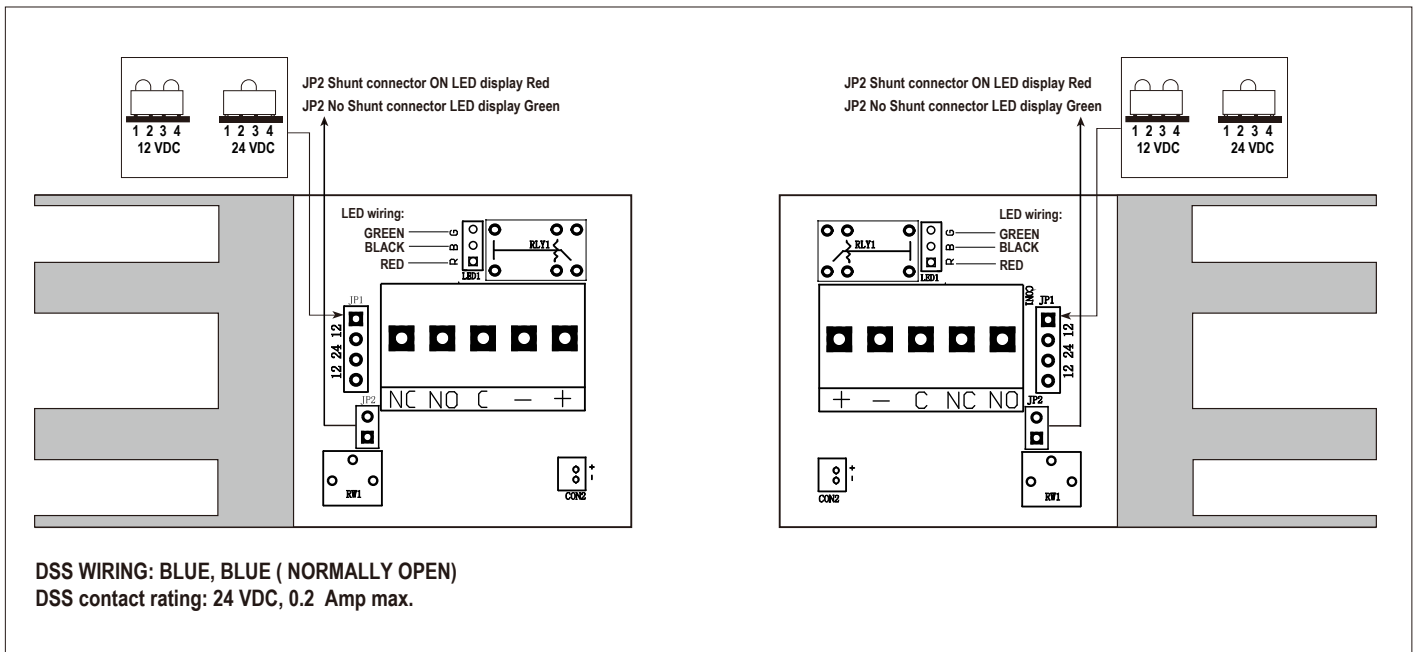
LED INDICATORS

SYSTEM STATUS	GREEN LIGHT	RED LIGHT	RELAY
POWER OFF	OFF	OFF	De-Energized
POWER ON-DOOR OPEN	OFF	ON	De-Energized
POWER ON-DOOR LOCKED	ON	OFF	Energized

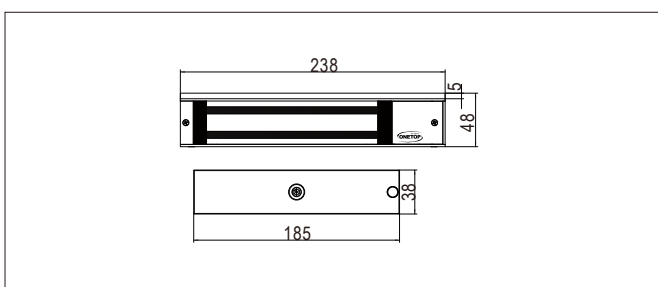
HH3600/F SERIES TROUBLE SHOOTING GUIDE

PROBLEM	POSSIBLE CAUSE	SOLUTION
Cannot remove mounting plate for installation	Two anti -tamper M3x13 screws blocks the entry of allen key tool	Remove the two anti -tamper M3x13 screw on cover plate and ends block
Door will not lock	No DC voltage to lock	Check power and wiring
	Loose wire	Check for correct voltage
	Wrong wiring	Check wirings connection
Reduced holding force	Bad physical contact between armature plate and face of magnet	Ensure mating surfaces are clean and in proper mating alignment and the armature plate align freely
	Low voltage or wrong voltage setting	Check magnetic lock for low voltage or wrong voltage setting
Delay in door release	Circuit switch connection done on the wrong negative line -VDC	Removed any diodes installed. All switching devices must be wired in between the DC power source and the positive terminal of the lock
	Secondary diode installed across magnetic lock	Remove this diode. PCBA has voltage protection
LED status is incorrect	Misalignment of armature plate	Check alignment of armature plate

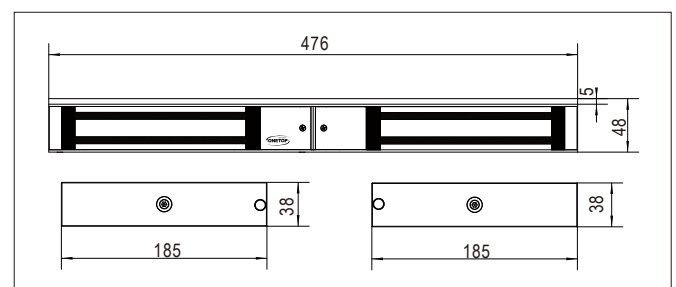
HH3600DT DSS/F SERIES WIRING



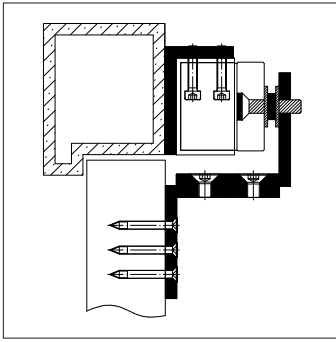
HH3600DSS/F SERIES



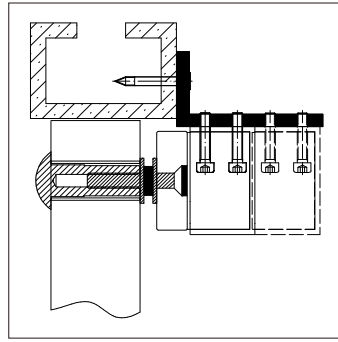
HH3600D DSS/F SERIES



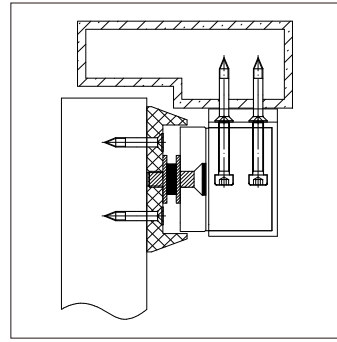
BRACKET INSTRUCTION



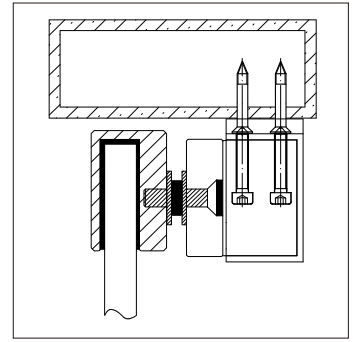
LZ



ATB

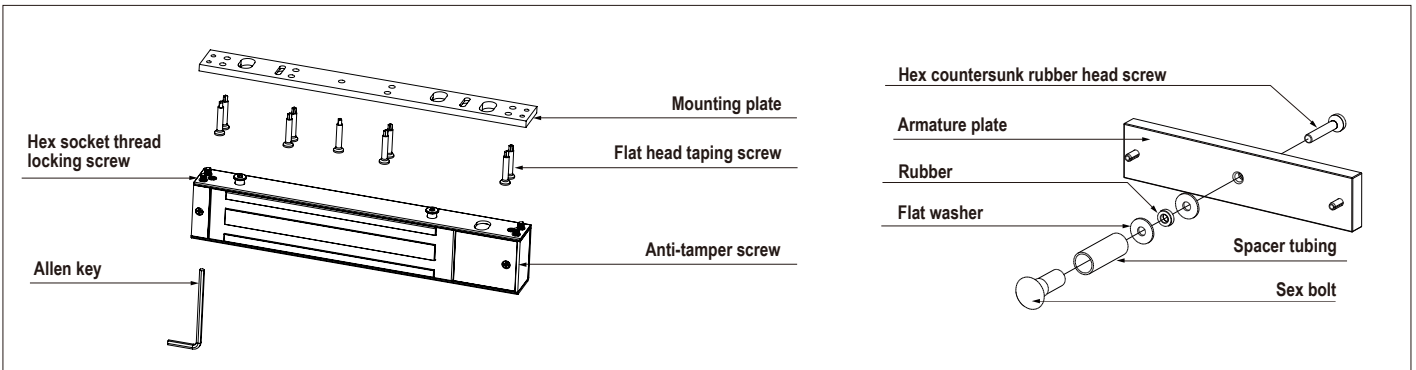


CHB



UBG

INSTALLATION DIAGRAM



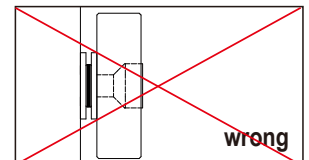
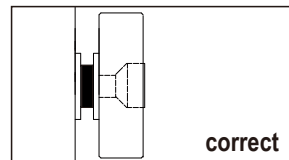
IMPORTANT SAFETY INSTRUCTION

Secure the magnetic lock body firmly to the door frame.

Our electromagnetic lock are shock resistant to unlimited door closures, so it is vital to periodically check if the electromagnetic lock is secure firmly on the top door header to prevent it from falling and causing possible injury.

Do not tighten the armature plate tight against the door.

The armature plate must be allowed to pivot on the mounting bolt to allow proper alignment with the magnet surface. If the plate is not aligned with the magnet surface, the lock may lose holding force or not lock at all. magnetic lock will lose holding force without this floating alignment.



Do not trim or remove the rubber washer on the head of the armature mounting bolt.

The rubber washer affixed on the head of the armature mounting bolt should project slightly beyond the surface of the armature plate. This is to allow the washer to expand when power is removed and break the air vacuum between the plate and the magnet surface. If this washer is removed or trimmed, the lock will appear to have some holding force even when power is removed.

