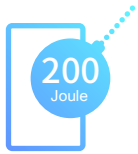


ONETOP

EM5000 SERIES

Weather Resistant
Series



200J Dynamic
Impact Resistance



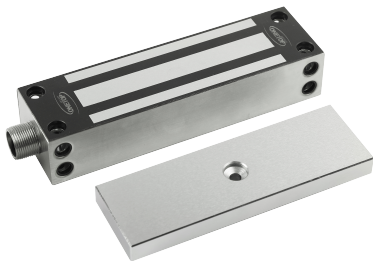
680Kg Holding Force



Over 1 Million Cycles
Usage Lifespan



Power to Lock



EM5000G



EM5000F



EM5000S



Anti-Corrosion Plating
Passed 96Hrs Salt Spray Test



Ingress Protection
Certification



Front or Side Fixing
Arrangement



Robust Stainless
Construction



Up to 4 Hours*
Fire Resistance Integrity

*EN 1634-1:2014 / BS EN 1634-1:2014 /
BS 476-22:1987

FEATURE

EM5000 series is a weather resistant magnetic lock with a built-in varistor (MOV) surge protection designed to suit external gates, and sliding door applications. EM5000G series is a Fail-Safe lock with holding force up to 680kg, Lock Status Sensor (LSS) and dual operating voltage of 12/24VDC. The lock model is provided with a dual fixing arrangement.

SPECS



EN 1634-1:2014
BS EN 1634-1:2014
BS 476-22:1987
4 Hrs Fire
Resistance Integrity



IP67

Fail Safe

Dimension

Weight

Operating Voltage

Operating Current

Holding Force

Impact Energy

Operating Conditions

Output Signals

Surface Finishes

Residual Magnetism

Power to Lock

Lock Body L 224 x W 63.5 x H 44.5mm

Armature Plate L 190 x W 61 x H 16mm

5.5Kg

12/24VDC $\pm 10\%$

12VDC – 480mA

24VDC – 240mA

680Kg

200J

Temperature

-10°C ~ 60°C

Humidity

0 ~ 85% (non-condensing)

Lock Status Sensor
(LSS)

COM/NO/NC:

Max 24VDC; Max 1A

Full weather resistant stainless Steel finish;
Electro galvanization to prevent from rusting

No residual magnetism

*No spring rebound mechanism on armature plate is required to overcome residual magnetism

MODELS

	Lock Status Sensor Monitoring	Side Mount	Front Mount	Conduit Head Connector
EM5000G	•	•	•	•
EM5000S	•	•		
EM5000F	•		•	

ACCESSORIES

L&Z EM5000G

In-swing door L&Z bracket

BL 5000GL

L bracket and mounting plate for Sliding Door application