

# ONETOP

## ES20MP SERIES

High Holding Force  
Electric Preload Strike



200J Dynamic  
Impact Resistance



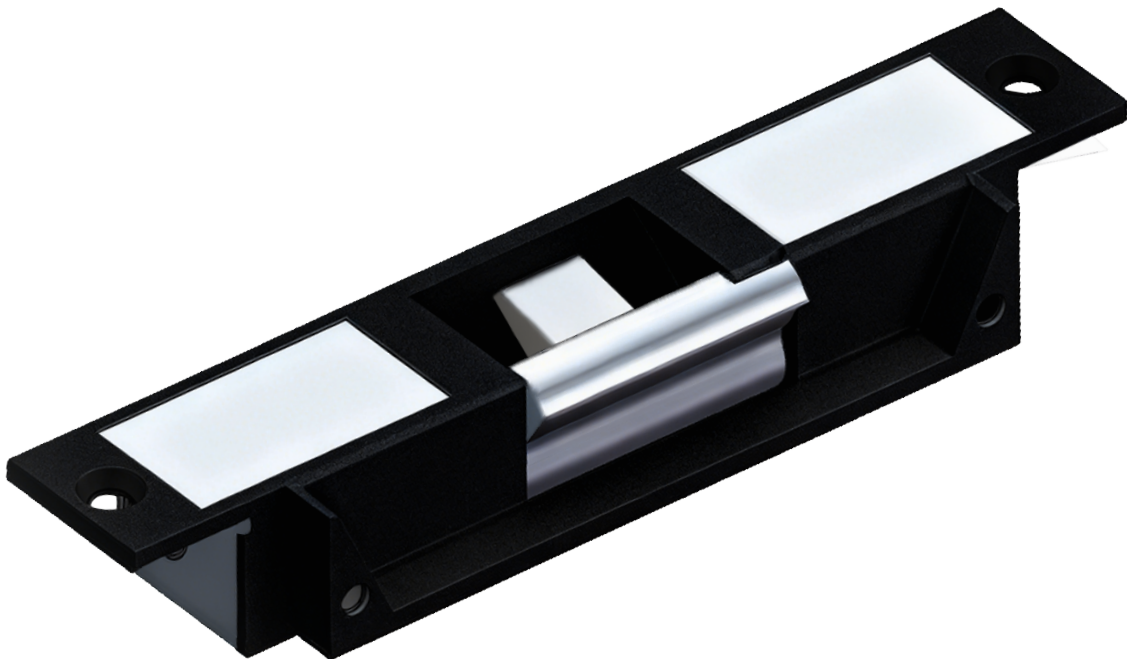
1000Kg Holding Force



Over 1 Million Cycles  
Usage Lifespan



Power to Lock  
Power to Open  
Change Over Settings



Preload 25Kg



Auto-Sensing  
12-24VDC

### FEATURE

The ES20MP electric preload strikes are stainless constructed strike body that can be Power to Lock (PTL)/ Power to Open (PTO) change over on site and vice versa, the holding force can hold 1000kg with 200J impact strength and performed to over 1 million life cycles. The ES20MP models are equipped with Lock monitoring Status Sensor and Door monitoring Status Sensor.

### SPECS



#### Fail Safe/Secure

Dimension

Weight

Operating Voltage

Operating Current

Holding Force

Preload

Impact Energy

Operating Conditions

Output Signals

Surface Finishes

Interchangeable

Strike Body

0.6Kg

12-24VDC  $\pm 10\%$

In rush high current 1 seconds: 12VDC – 1350mA; 24VDC – 680mA  
Normal current: 12VDC – 350mA; 24VDC – 180mA

1000Kg UP

25Kg

200J

Temperature

Humidity

Power to Open  
Power to Lock

L 175.6 x W 39 x D 26.2mm

-10°C ~ 60°C

0 ~ 85% (non-condensing)

Lock Status Sensor  
(LSS)

COM/NO/NC:  
Max. 125VAC, 3A;  
Max. 30VDC, 2A

Door Status Sensor  
(DSS)

COM/NO/NC:  
Max. 125VAC, 3A;  
Max. 30VDC, 2A

Anti-Tamper Switch  
COM/NO/NC:

Max. 125VAC, 5A;  
Max. 250VDC, 3A

One-piece solid stainless steel body\*

\*Powder Coated Black

### MODELS

	Lock Status Sensor Monitoring	Door Status Sensor Monitoring	Anti-Tamper Switch	Add Extension Lip 5mm
ES20MP	•	•	•	•

### ACCESSORIES

ES20-EL15

ES20-EL25

ES20-EL50

ES20-EL75

15mm Extension Lip for ES20MP series

25mm Extension Lip for ES20MP series

50mm Extension Lip for ES20MP series

75mm Extension Lip for ES20MP series