



300Kg True Holding Force



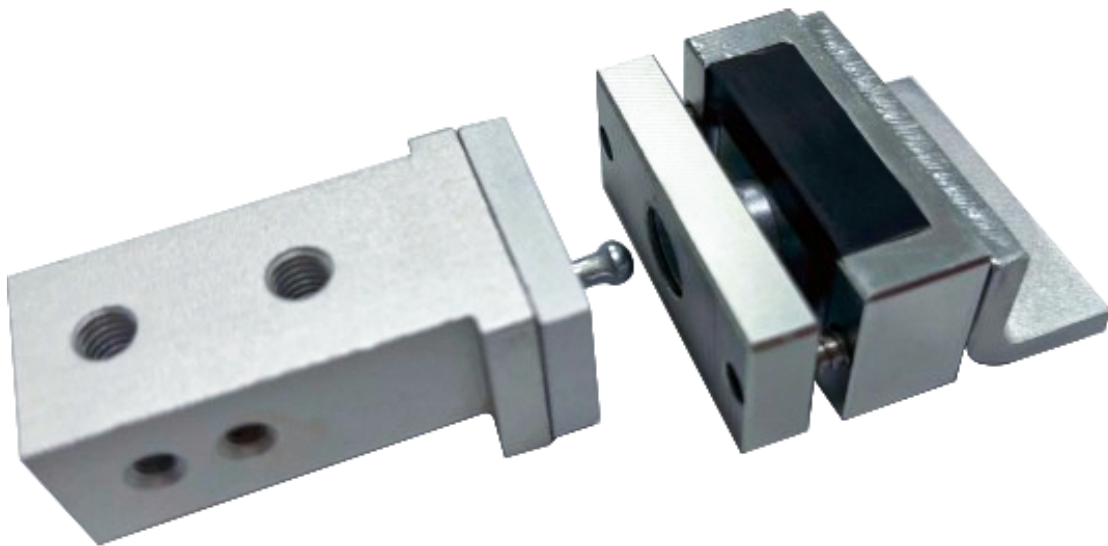
Power to Lock



Over 1 Million Cycles
Usage Lifespan



Slim Mini Typed



FEATURE

The MAL20 series are Automatic sliding door lock design for use on sliding door security installation. It holds to a strong holding force of 300kg that would release instantly without any residual magnetism at all when Power is applied to open the unit.

SPECS



Fail Safe	Power to Lock
Dimension	Lock Body L 41 x W 40 x H 19.5mm Armature Plate L 25 x W 22 x H 56.5mm
Weight	0.4Kg
Operating Voltage	24VDC ±10%
Operating Current	24VDC – 150mA
Holding Force	300Kg
EXIT	Press onto the exit switch to cut magnet power to open door and power will resume 3 seconds later when Exit switch is release to close the door.
FACP	FACP ON will override EXIT to activate the magnet to close door FACP OFF will override EXIT to deactivate the magnet to open door.
Operating Conditions	Temperature -10°C ~ 60°C Humidity 0 ~ 85% (non-condensing)
Surface Finishes	Anodized Aluminum High Quality Plating for Anti-corrosion

MODELS

	EXIT	FACP
MAL20A	•	•
MAL201A	•	