



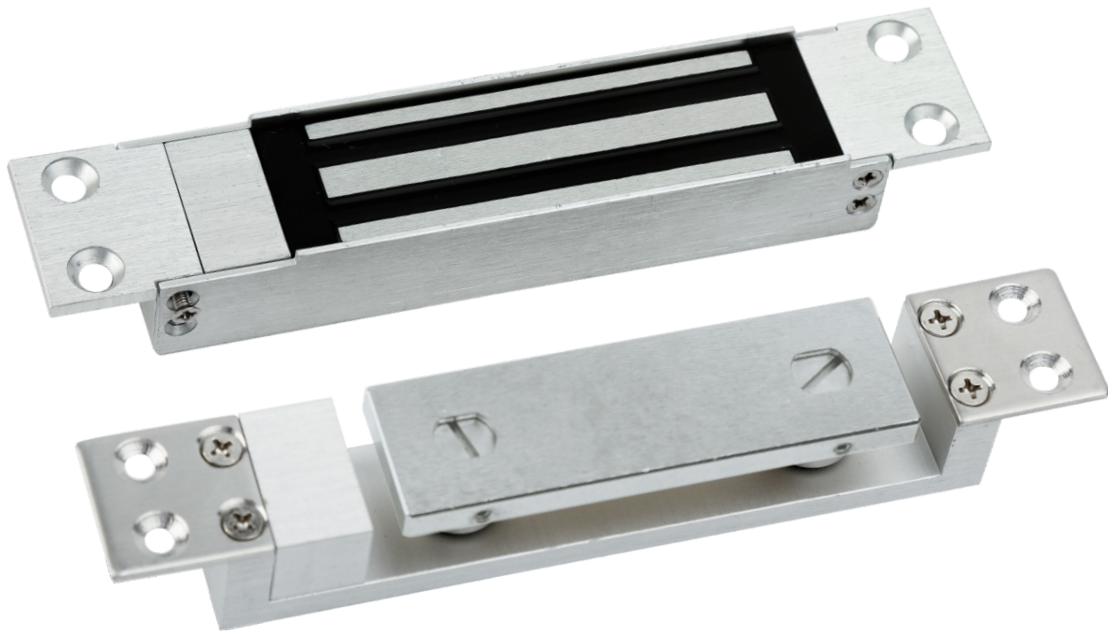
300Kg Holding Force



Power to Lock



Over 1 Million Cycles  
Usage Lifespan



Anti-Corrosion Plating  
Passed 96Hrs Salt Spray Test



Auto-Sensing  
12-24VDC

### FEATURE

SH2500 shear locks are designed for 90° degree swing door application. It is small to be install concealed under the top door and frame, it operates on 12 to 24VDC shear force with no residual magnetism.

## SPECS



### Fail Safe

#### Dimension

#### Weight

#### Operating Voltage

#### Operating Current

#### Holding Force

#### Operating Conditions

#### Delay Timer

#### Output Signals

#### Surface Finishes

### Power to Lock

#### Lock Body

#### Armature Plate

0.7Kg

12-24VDC ±10%

12VDC – 1200mA ( Rush)  
200mA ( Hold)

300Kg

Temperature

Humidity

Built-in 0-6 seconds

Lock Status Sensor  
(LSS) Option  
COM/NC/NO:  
Max 24VDC; Max 1A

Anodized Aluminum Housing

High Quality Plating for Anti-corrosion  
(96 Hrs Salt Spray Corrosion Tested)

L 165 x W 31 x H 22mm

L 165 x W 26 x H 31mm

24VDC – 600mA ( Rush)  
100mA ( Hold)

-10°C ~ 60°C

0 ~ 85% (non-condensing)

### Lock Status Sensor Monitoring

## MODEL

SH2500

•