

ONETOP

EC3800M

ECO
High Holding
Force Series



100J Dynamic
Impact Resistance
*AS4145.2 Standard



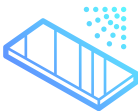
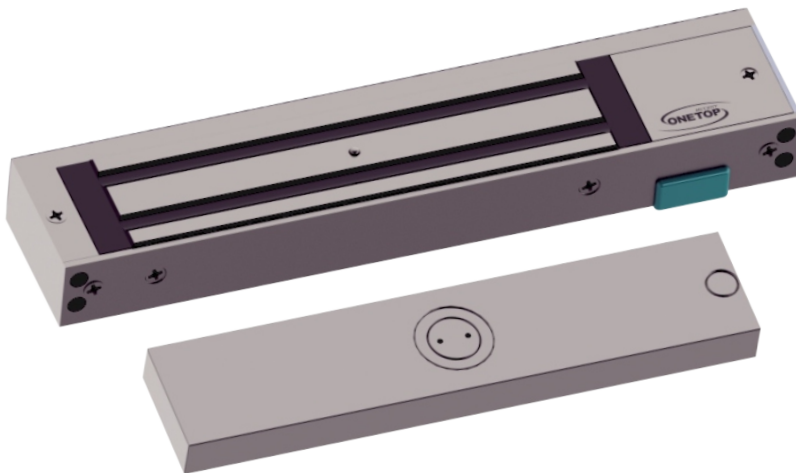
300Kg True Holding Force



Over 1 Million Cycles
Usage Lifespan



Power to Lock



Anti-Corrosion Plating



Red/Green/Off
High Visibility Light Panel



Up to 4 Hours*
Fire Resistance Integrity
*EN 1634-1:2014 / BS EN 1634-1:2014 /
BS 476-22:1987



Auto-Sensing
12-24VDC



ECO Green
Energy Saving

FEATURE

The patented EC3800M Eco-Electromagnetic Lock (ECO-LOCK) is a power saving Electro-Magnetic Lock. Under normal, non-alarm conditions, it operates in a low current 'Sleeping Mode' of 60mA@24V with a holding force of 90kg. In the event of an un-authorized attempt to open the door, the EC3800M "wakes up" and goes into an Alarm Mode with full current of 300mA@24V applied to the device, instantly increasing the holding force to up to 300kg.

The EC3800M operates on 12-24VDC, provides full monitoring of Lock Status and Door Status, LED light Panel indicator and an Exit Switch Delay function.

SPECS



EN 1634-1:2014
BS EN 1634-1:2014
BS 476-22:1987
4 Hrs Fire
Resistance Integrity



Fail Safe

Dimension

Weight

Operating Voltage

Operating Current

Holding Force

Impact Energy

Operating Conditions

Output Signals

Surface Finishes

Power to Lock

Lock Body

Armature Plate

2.0Kg

12-24VDC $\pm 10\%$

12VDC – 680mA (Rush)
130mA (Hold)

L 238 x W 48.5 x H 26.5mm (Single)

L 185 x W 39.5 x H 14mm

24VDC – 340mA (Rush)
70mA (Hold)

300Kg

100J

Temperature

-10°C ~ 60°C

Humidity

0 ~ 85% (non-condensing)

Lock Status Sensor
(LSS)

COM/NO/NC:

Max 24VDC; Max 1A

Door Status Sensor
(DSS)

COM/NO:

Max 24VDC; Max 0.2A

Red/Green/Off
Light Panel

Anodized Aluminum Housing

High Quality Plating for Anti-corrosion

MODEL

EC3800M

Light Pane

•

Lock Status
Sensor
Monitoring

•

Door Status
Sensor
Monitoring

•

ACCESSORIES

L&Z 3500

In-swing door L&Z bracket

UBG12M

Glass door bracket for 12mm thick glass door

CHB

Armature plate holder

ATB 3500

Adjustable L bracket